

Year 6 Maths Homework.

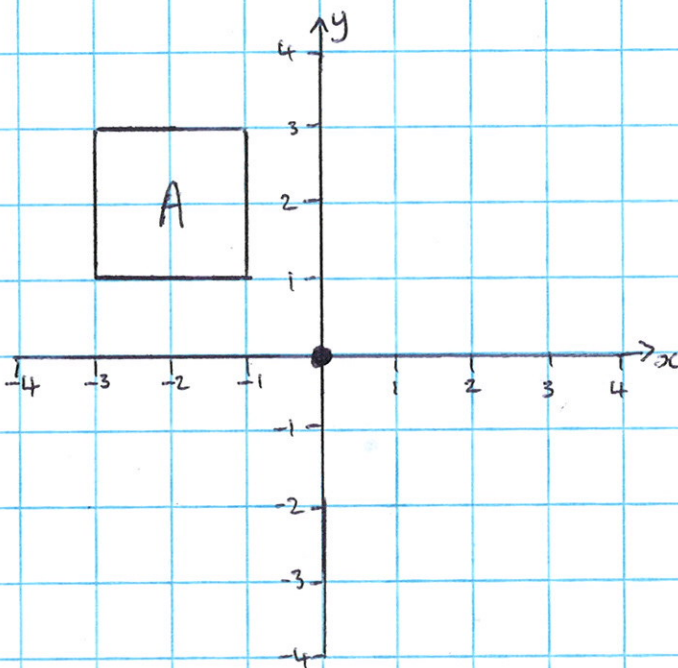
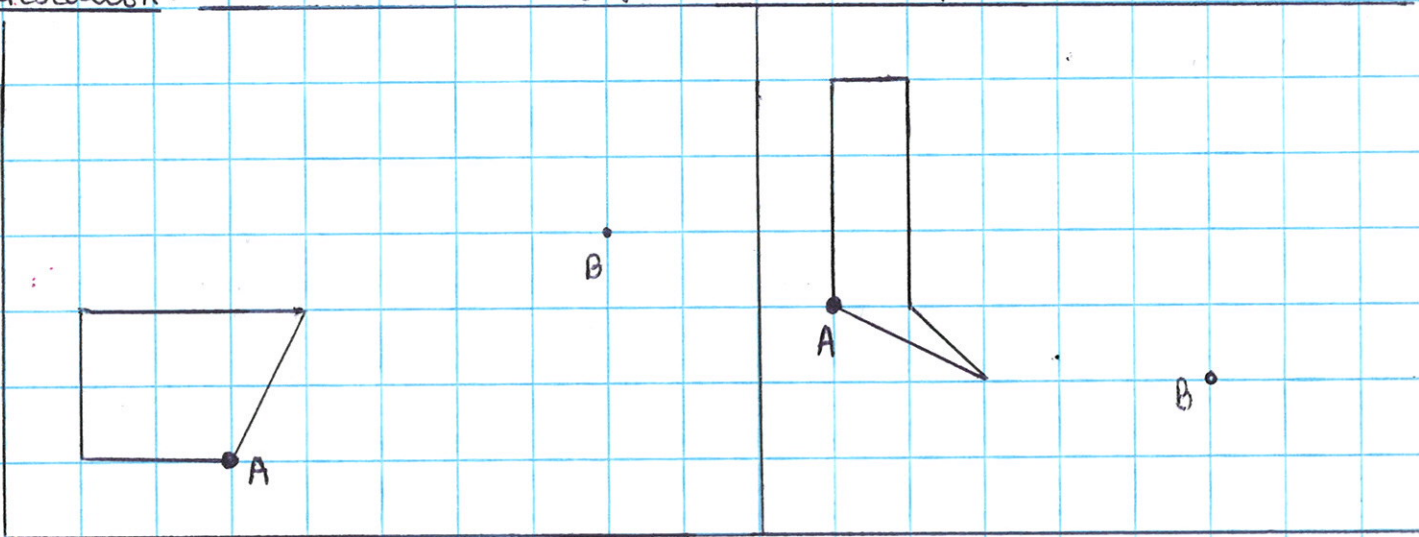
Find ?

$$? + 4 \times 3 - 3 = 30$$

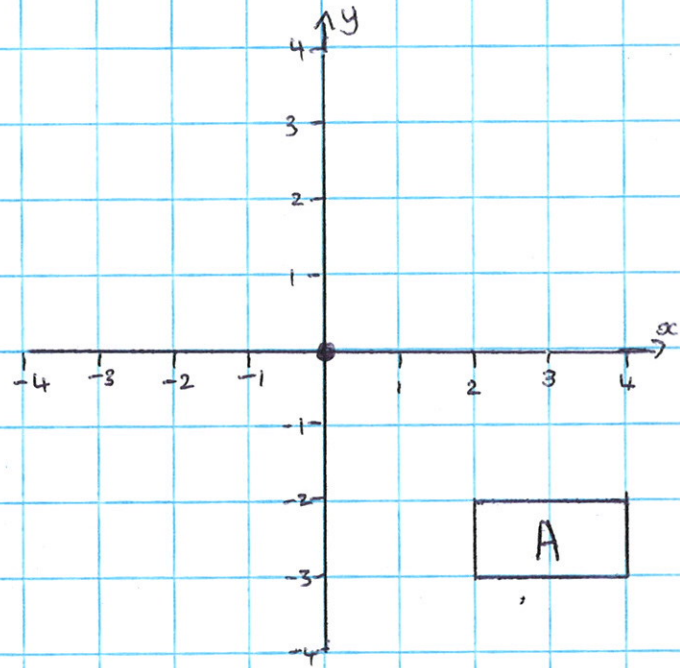
$$? - 6 \times 20 + 40 = 100$$

$$? \times 8 + 200 \div 16 = 16$$

Translation. - translate shapes if point A moves to point B.



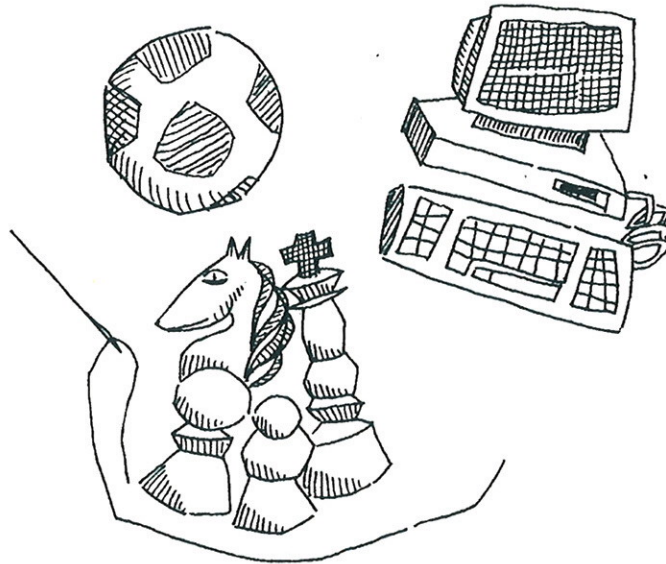
Rotate A 90° clockwise



Rotate A 90° anticlockwise

A School Club

At Jack's school, there are clubs for children to join. These happen at lunchtime and also after school. There are clubs for learning to play chess, to use computers, to play football or netball, to sew and knit, and several more.



Your task is to write a short description of one school club, and why you might like to join it.

Remember you need: an ^{introduction} ~~summary~~, three main paragraphs and a ~~summary~~.

Before you start, make some brief notes:

Name of the club _____

- What happens at the club?
- What are the benefits of doing the club?
- What awards, competitions do you get a chance to do?

Remember, you will NOT receive any marks for pictures or decoration.