

Maths

In Maths this week we have been learning to use a number line to find time differences.

Station	Train A	Train B
Cleethorpes	11:38	11:49
Skegness	12:45	12:38
Mablethorpe	13:57	13:42
Grimsby	16:03	15:58

The timetable to work out:

- How long train A takes to get from Skegness to Grimsby
- How long train B takes to get from Cleethorpes to Grimsby
- How long a return (there and back) journey takes between Skegness and Mablethorpe on train A
- Which is the fastest train between Skegness and Grimsby.

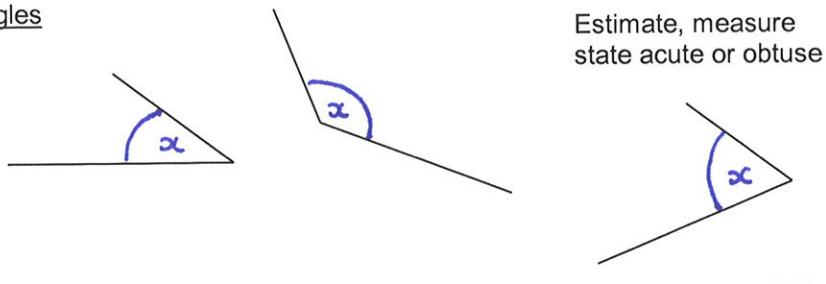
BBC 1		ITV 1	
6:40	News	6:25	X Factor
7:35	Strictly Come Dancing	7:15	Dancing on Ice
9:10	Golf	8:45	Coronation Street
9:50	Harry Potter	10:30	Come Dine with Me
11:25	Football	11:40	News

- If I watch Strictly Come Dancing then turn over to ITV 1, what will be on?
- How long does Harry Potter last for?
- Which is longer Strictly Come Dancing or Dancing on Ice?

Complete

%	Decimal	Fraction
10		
	0.25	
		1/2
75		
	0.01	
		1/1
28%		
		1/3
	0.3	

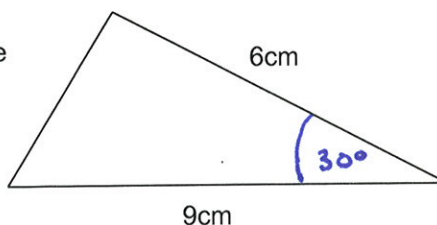
Angles



Construct

Make angles of 30 degrees, 85 degrees and 145 degrees

Construct this triangle using a ruler and protractor

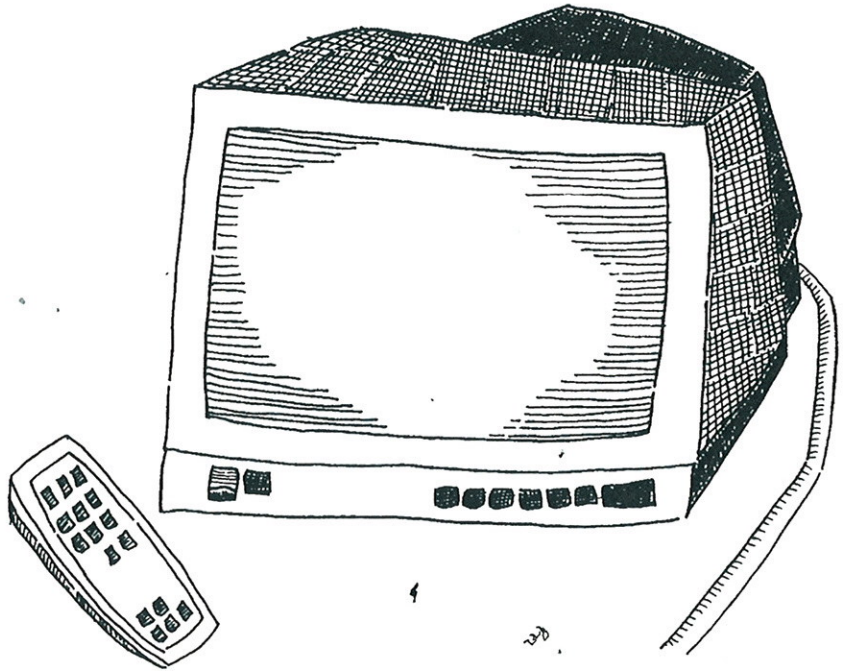


The Programme

Some children spend hours watching television.

Imagine you are one of these people. Think of a real or imaginary programme you have seen.

Write a report about the programme.



**Your task is to describe a television programme.
Also say what you liked and disliked about it.**

Before you start, make some brief notes:

The programme is called _____

What it is about:

-
-

Likes and dislikes about the programme:

-
-

Remember, you will NOT receive any marks for pictures or decoration.